

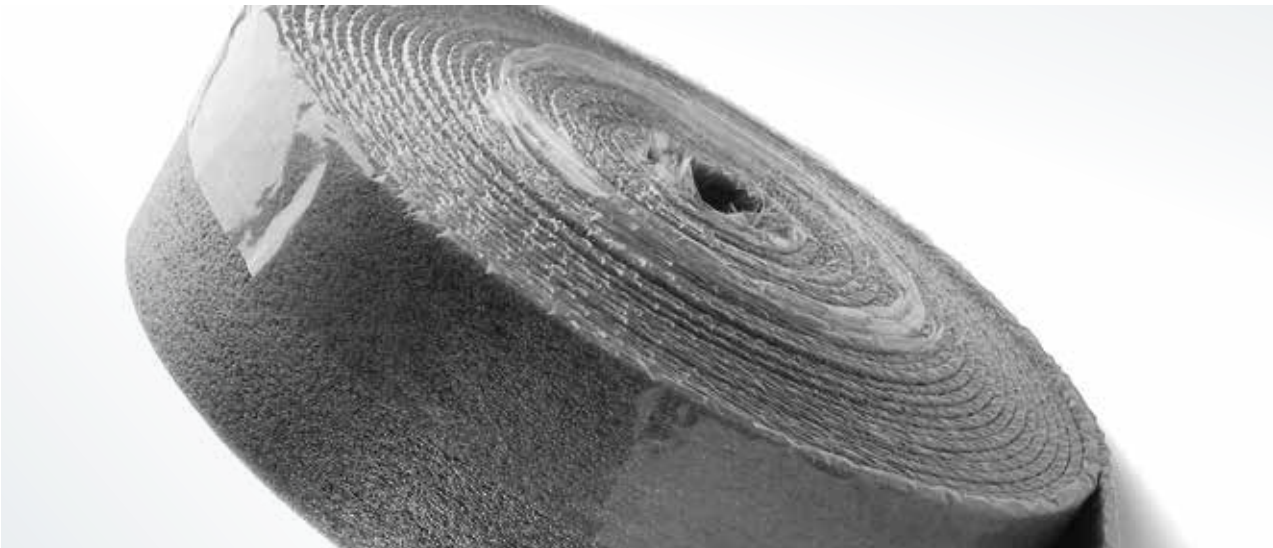


# NOMATEC®

[www.nmc-nomafoam.com](http://www.nmc-nomafoam.com)

## TECHNICAL DATA SHEET

# NOMATEC® RDS



NOMATEC® RDS are edge expansion joints, in closed cell PE foam, for cement floor and floor heating systems.

- › Extremely flexible
- › Available with or without PE foil
- › Preslit and perforated system to enable easy tearing of the overlapping piece

### PRODUCT FEATURES:

- › Closed cell PE-LD foam
- › Density  $18 \text{ kg/m}^3 \pm 2 \text{ kg/m}^3$
- › Fire class: E according to DIN EN 13501-1: 2010
- › Colour: grey
- › Supplied as rolls

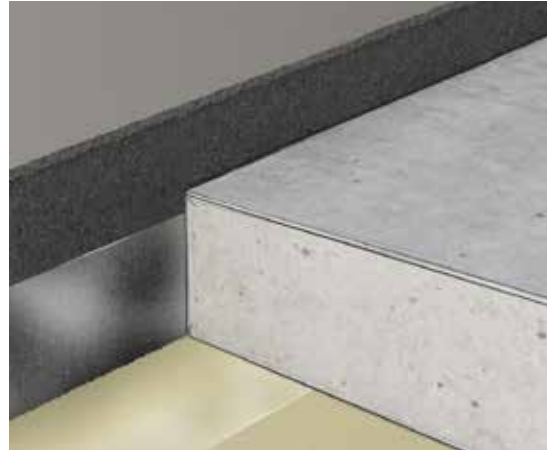
### APPLICATIONS:

- › Specially designed for wall, corner or door edges



## TECHNICAL DATA SHEET

# NOMATEC® RDS



› FSRS = RDS with PE foil, tear-off perforation and adhesive

Type	Thickness mm	Width foam mm	Width PE-foil mm	Density kg/m <sup>3</sup>	Length/Roll m	Packaging unit	Item code
8 x 150 FSRS	8 +1/-1	150 +5/-5	170	18 +2/-2	25	4 x 25 m	3000199
20 x 150 FSRS	20 +1/-1	150 +5/-5	170	18 +2/-2	25	4 x 25 m	3042399
8 x 300 FSRS	8 +1/-1	300 +5/-5	170	18 +2/-2	25	4 x 25 m	3028294

## ALSO IN OUR RANGE



**NOMATEC® BACKER ROD HOLLOW & FULL**  
NOMATEC® Backer Rod Hollow & Full round profiles are manufactured from closed-cell polyethylene foam and are used as backing material for elastomeric and other cold-applied sealants.

They are inserted into a joint to control the sealant depth and act as bondbreakers, without adhering to the sealant.



## NOMATEC® ROOF SEAL

NOMATEC® Roof Seal are self adhesive profiles with open cell PE foam specially designed to seal the roof area. Thanks to their unique cut profile, they adapt themselves to nearly every roof shape and reliably fill gaps and fugues.

NMC reserves the right to update the product line or its technical features to the state-of-the-art technology any time and without previous announcement. All given information is to the best of our knowledge. If you have any questions concerning technical details please contact the NMC information service. Any partial reproduction or reprint shall require our explicit approval.



**NMC sa**

Gert-Noël-Strasse · B-4731 Eynatten  
☎ +32 87 85 85 00 · 📠 +32 87 85 85 11  
info@nmc.eu



[www.nmc-nomafoam.com](http://www.nmc-nomafoam.com)